

W50 - W59

Zusammensetzung

100% Polyester

Gewicht

400 gr / m² +/- 5%

Lichtechtheit

DIN EN ISO 105-B02: 2002, 5 - 7

Reibechtheit

DIN EN ISO 105-X12: 2002

4 - 5 trocken und nass

Scheuerfestigkeit

Martindale (12 Kpa),

DIN EN ISO 12947-2:

2007, 50.000 Touren

Feuersicherung

D - DIN EN1021:1994-01 Teil 1

D - DIN EN1021:1994-01 Teil 2

Farbabweichungen

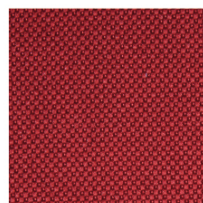
Handelsübliche Farb-
abweichungen vorbehalten

Bemerkung

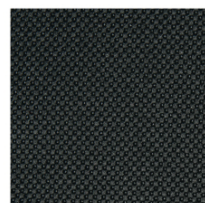
Schwerentflammbarkeit hängt
von verwendetem Schaum ab



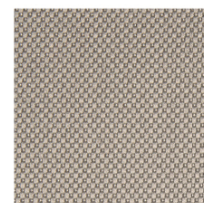
W50



W51



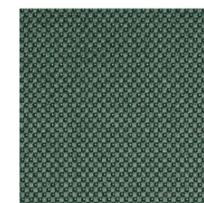
W52



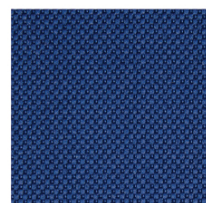
W53



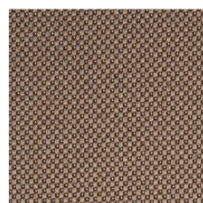
W54



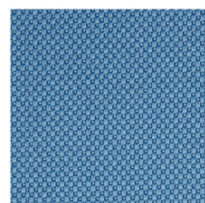
W55



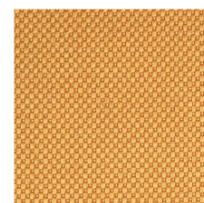
W56



W57



W58



W59