

KCO - KC18

Zusammensetzung

100 % PES

Gewicht

308 g/m²(+/- 5%)

Scheuerfestigkeit

85.000 Touren

Lichtechtheit

Note 4 - 5

Reibechtheit

Nass 5, Trocken 5

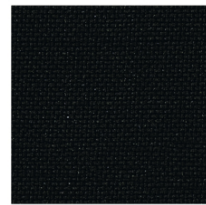
Pilling

Note 5

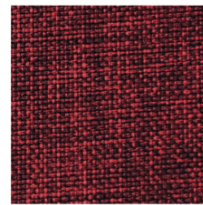
Brandschutzklasse

BS 5852-1

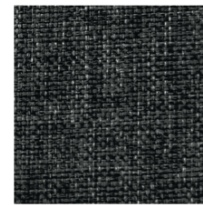
BS 5852-2



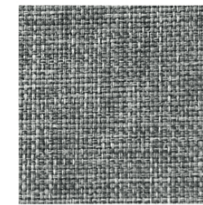
KC0



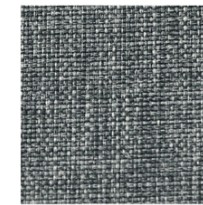
KC1



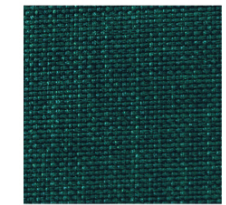
KC2



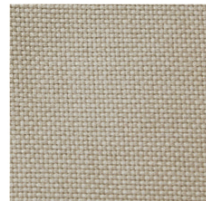
KC3



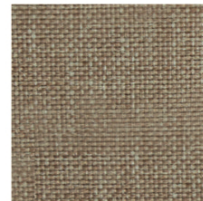
KC4



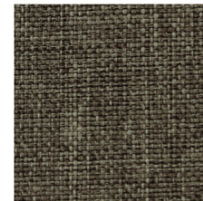
KC5



KC6



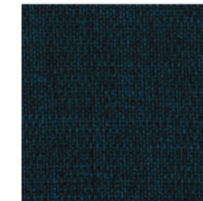
KC7



KC8



KC9



KC16



KC18